

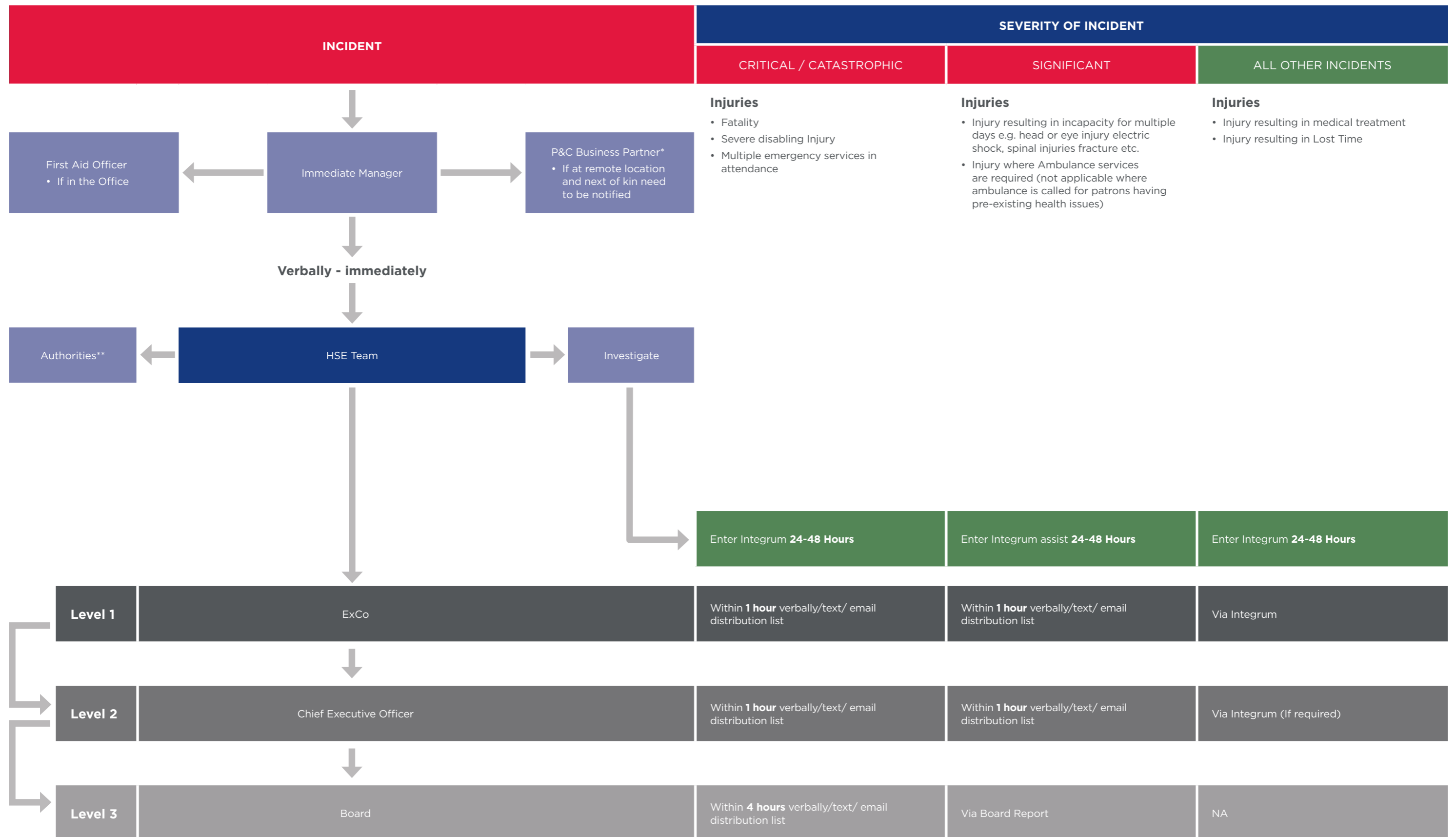
Incident escalation and notification protocol



Creating more affordable and sustainable communities

Landcom Staff

This protocol must be followed for all Incidents that are work-related regardless of the location of the Incident. Including remote working, and travelling to and from project sites and external site meetings.



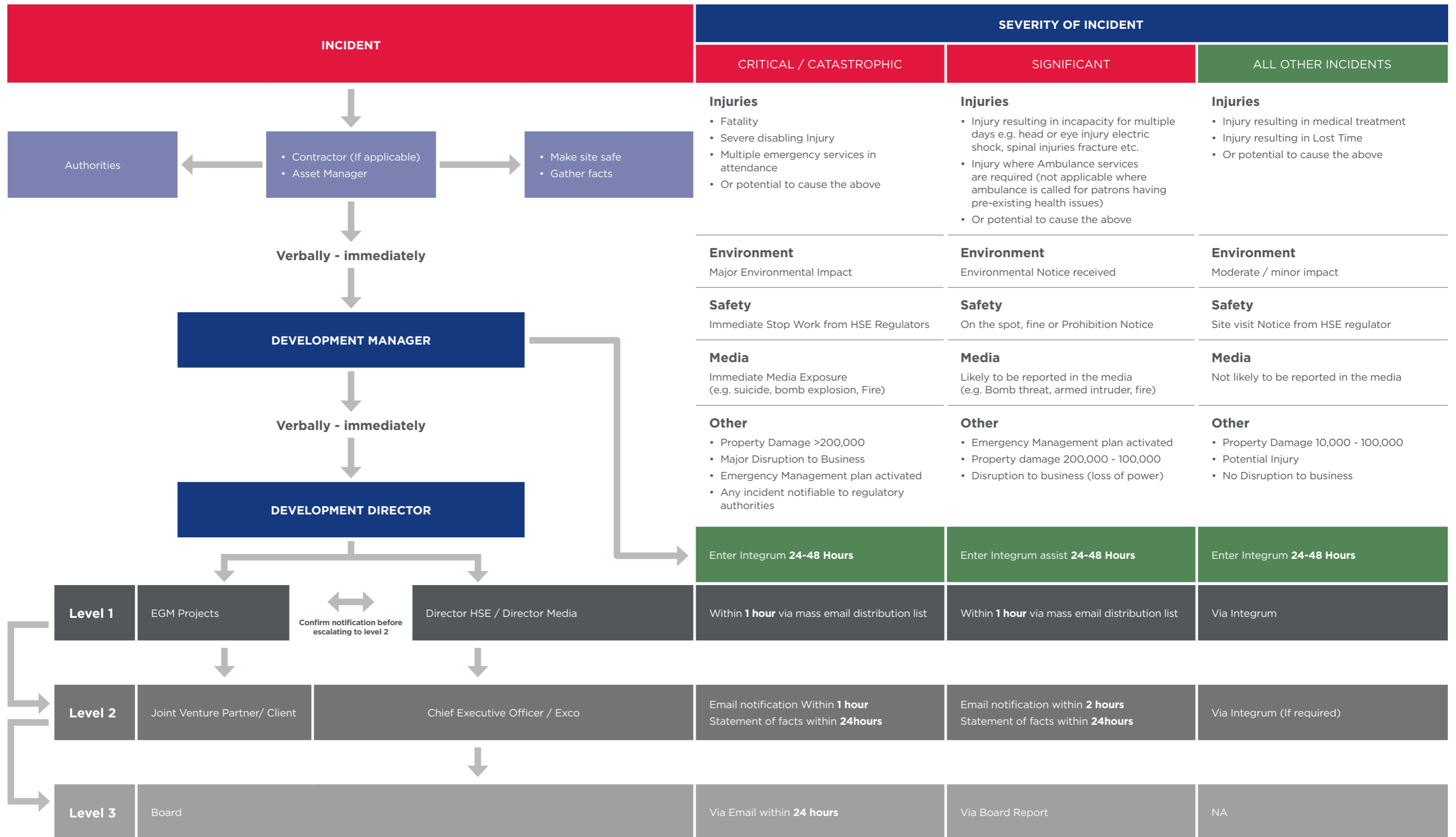
Legend: HSE - Health Safety Environment / Exco - Executive Committee / P&C - People & Culture / Authorities - Emergency Services and SafeWork NSW Manager * if P&C Business Partner is not available contact any other P&C member ** Only HSE Team will notify SafeWork NSW

Incident escalation and notification protocol

Landcom Control (Holdings / Maintenance Assets / Works under \$250,000)



Creating more affordable and sustainable communities



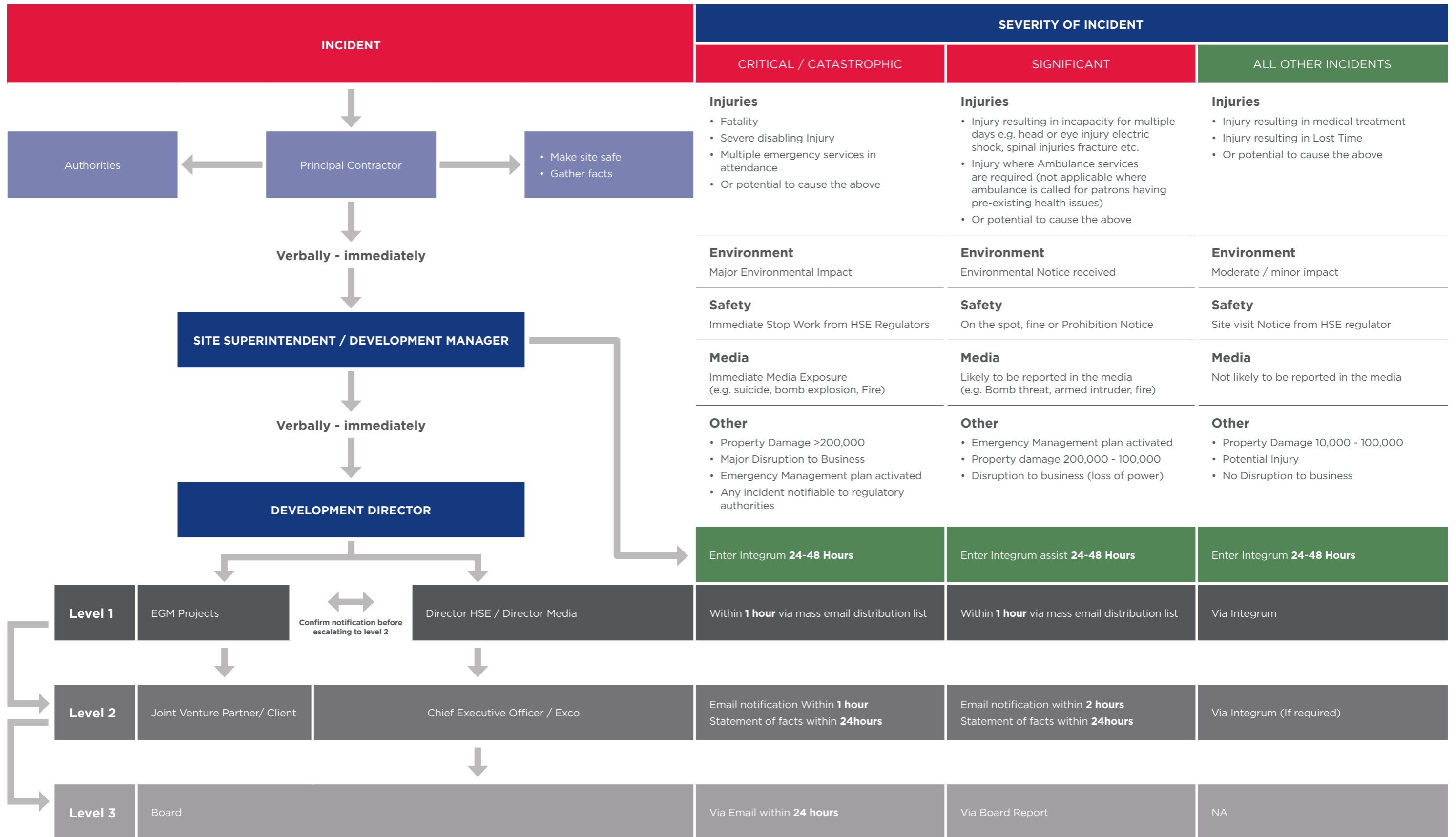
Legend: PC - Principal Contractor / EGM - Executive General Manager / HSE - Health Safety Environment / Exco - Executive Committee

Incident escalation and notification protocol

Principal Contractor



Creating more affordable and sustainable communities



Legend: PC - Principal Contractor / EGM - Executive General Manager / HSE - Health Safety Environment / Exco - Executive Committee